

## EASY INSTALLATION & CARE



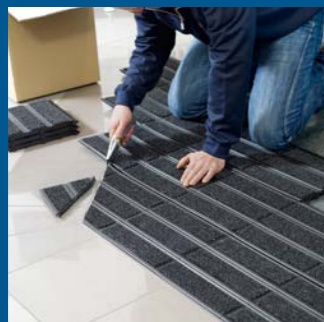
### Delivery

CONNEXX Connect modules are delivered in boxes (1 box = 16 modules = 1m<sup>2</sup>). They are stacked to save space, so that any items you do not use can easily be put into storage until a later date.



### Connection

Simply connect the required number of tiles together to cover the floor with the Connect system. Use a rubber hammer to secure up the joins if necessary.



### Taking Shape

Use a straight edge and a sharp safety knife to cut the Connect modules to the required shape. Simply cut off excess matting and adapt the clean-off zone to the shape of the installation frame.

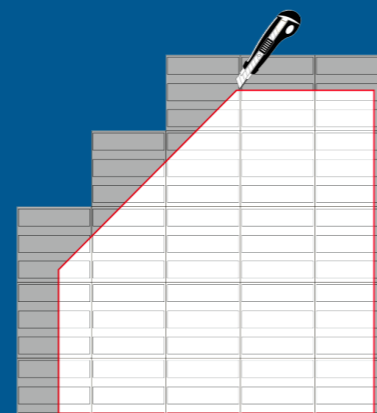
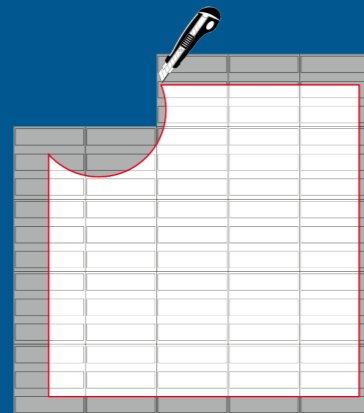
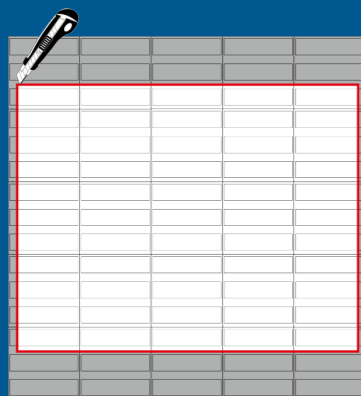


### Start & Finish

When installing the matting, start in the centre and work out towards the sides. Ensure that the mat is big enough by laying it over the area to be covered, leaving a generous overlap on all sides. Then mark the cutting edges and cut to size with the safety knife. TIP: To avoid shrinkage (for example, in the event of significant temperature fluctuations), complete the installation by bonding the modules to the floor.

### Cleaning & Care

Vacuum regularly.



MODULAR MATTING SYSTEM

distributed by



THE EDGE ON SAFETY

[www.tredsafe.com](http://www.tredsafe.com)



## FAST | SIMPLE | EFFECTIVE

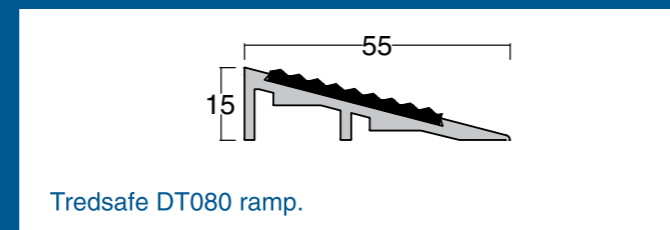
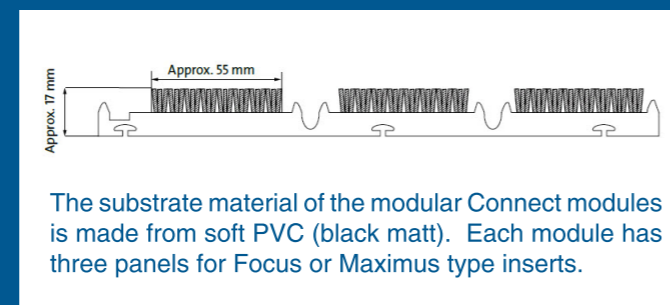
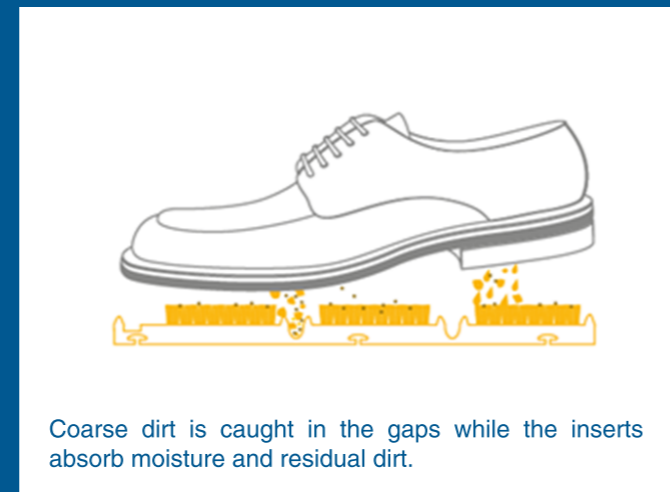
CONNEXX Connect is a modular matting system offering easy, clean and flexible solutions to protect any entrance area.

Using only a rubber hammer to tap the connectors together, CONNEXX Connect modules can be quickly overlaid into any area.

Shaped mat wells are not a problem as a sharp knife can be used to cut any required shape from the module edges.

## FEATURES

- Body consists of 100% soft PVC, making it easy and fast to adjust on site.
- The Maximus insert is 100% PA 6.6 giving the advantage of high moisture absorbency.
- Gaps between each insert are small which means a larger coverage of inlay.
- Modules can easily be replaced.
- Supplied in 1m<sup>2</sup> boxes with 16 x 250 x 250mm modules.
- Pre-assembled in 4 layers of 4 tiles for faster installation.
- Easily cut to shape on site using a safety knife.
- Tredsafe's DT080 ramp can be used in place of a mat well.
- Flexible base suitable for uneven floor surfaces.



## FLEXIBILITY IN FUNCTION AND COLOUR

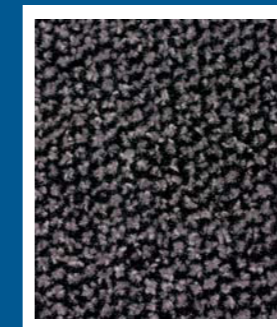
CONNEXX modules are available in two different insert types. Each insert type comes in four different colours, creating a wide range of variety for your architectural concept.

### Focus

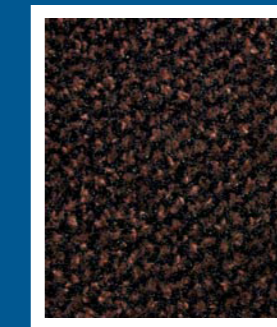
Focus is a durable clean-off floor covering with a perfect dual fibre cleaning structure (pile weight 1030 g/m<sup>2</sup>). It is suitable for areas of buildings with very high footfall. The coarse fibre brushes away dirt and the fine fibre absorbs moisture.



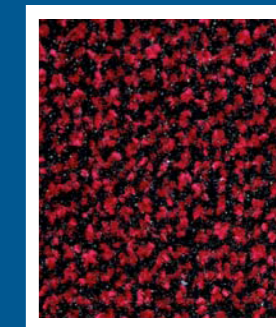
Anthracite 25.01



Grey 25.02



Brown 25.03



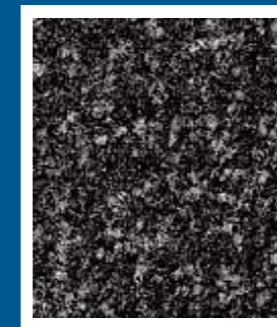
Red 25.04

### Maximus

Maximus is made from tufted velour with a pile weight of 1000 g/m<sup>2</sup>. It is dimensionally stable, abrasion-proof, achieves optimum cleaning performance and absorbs high levels of moisture.



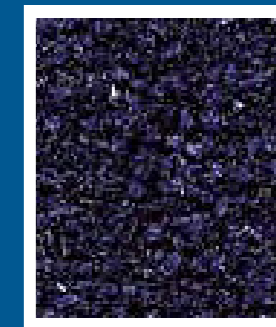
Black Mottled 81.01



Grey Mottled 81.03



Brown 81.04



Blue Single Colour 80.06

- Mottled Black stock colour.
- All other colours are a minimum order of 20m<sup>2</sup> = 1 pallet.
- Minimum lead time of 8 weeks from receipt of order.
- Refer to [www.tredsafe.co.nz](http://www.tredsafe.co.nz) or +64 9 813 5236 for a list of distributors.